

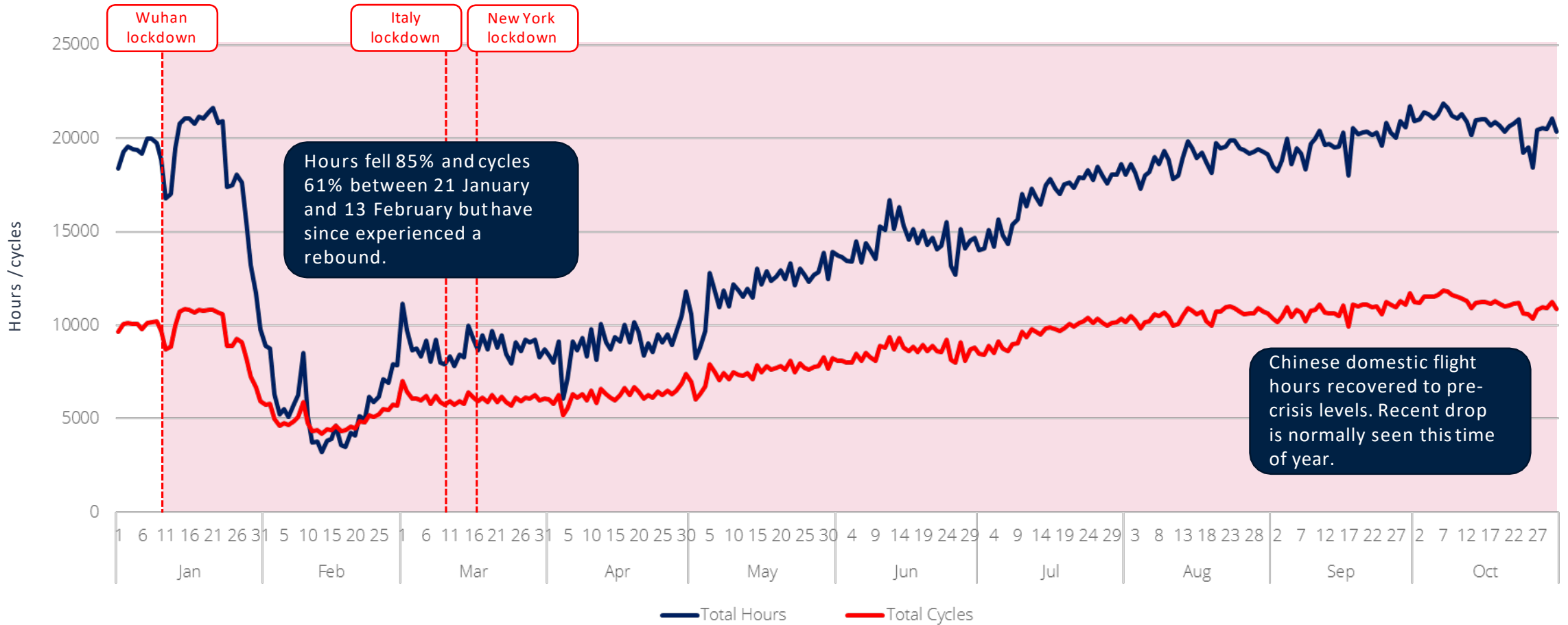
AWIN Market Analysis | Commercial Aviation Utilization

Intelligence & Data Services | Aviation Week Network
Washington, D.C.

November 2020

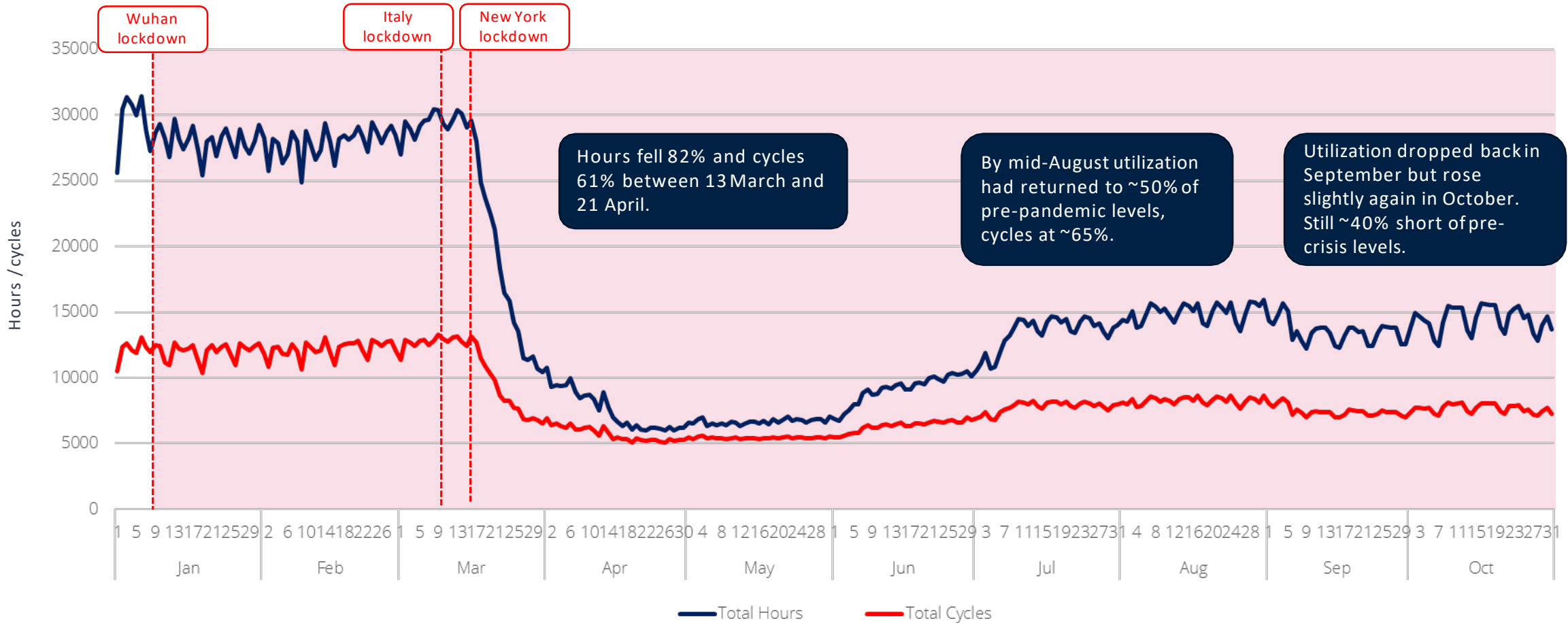
Utilization – China Domestic

Utilization rates in hours and cycles on domestic Chinese routes – January to October 2020



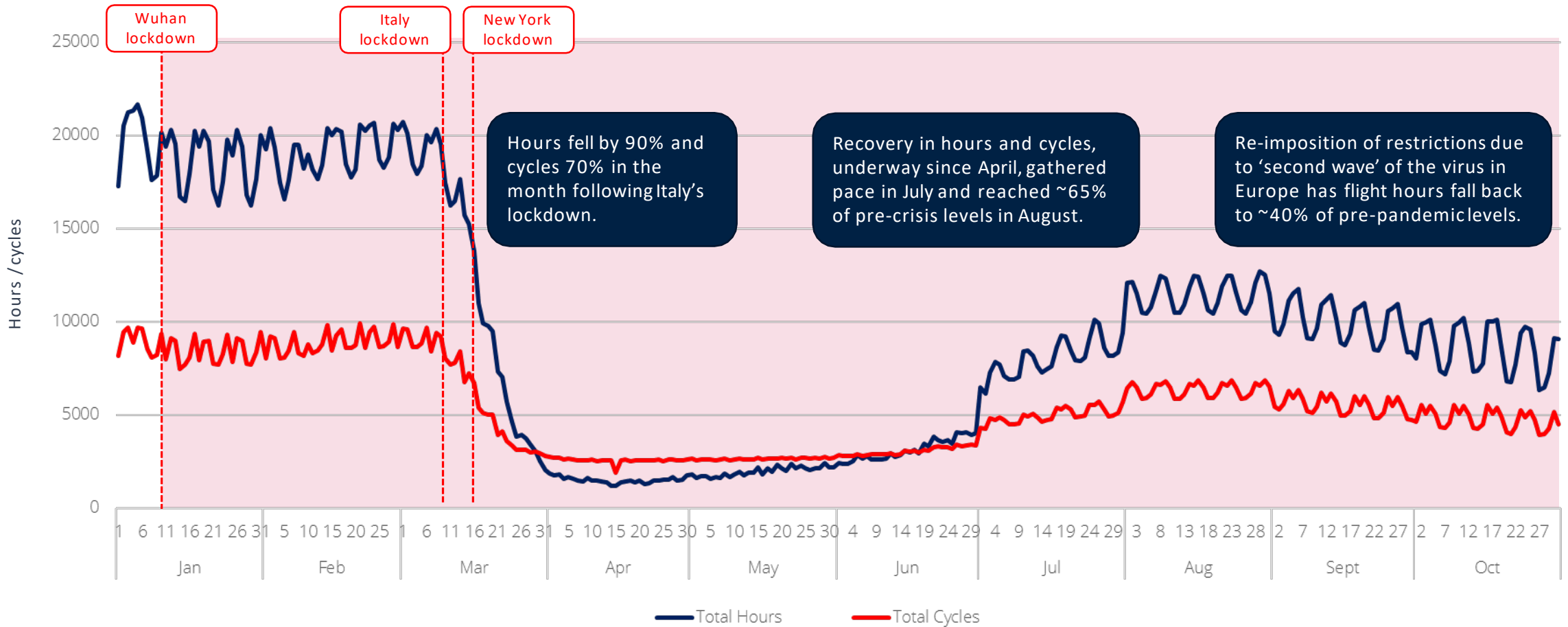
Utilization – Major US Airlines

Utilization rates in hours and cycles at American, Delta, Southwest and United – January to October 2020



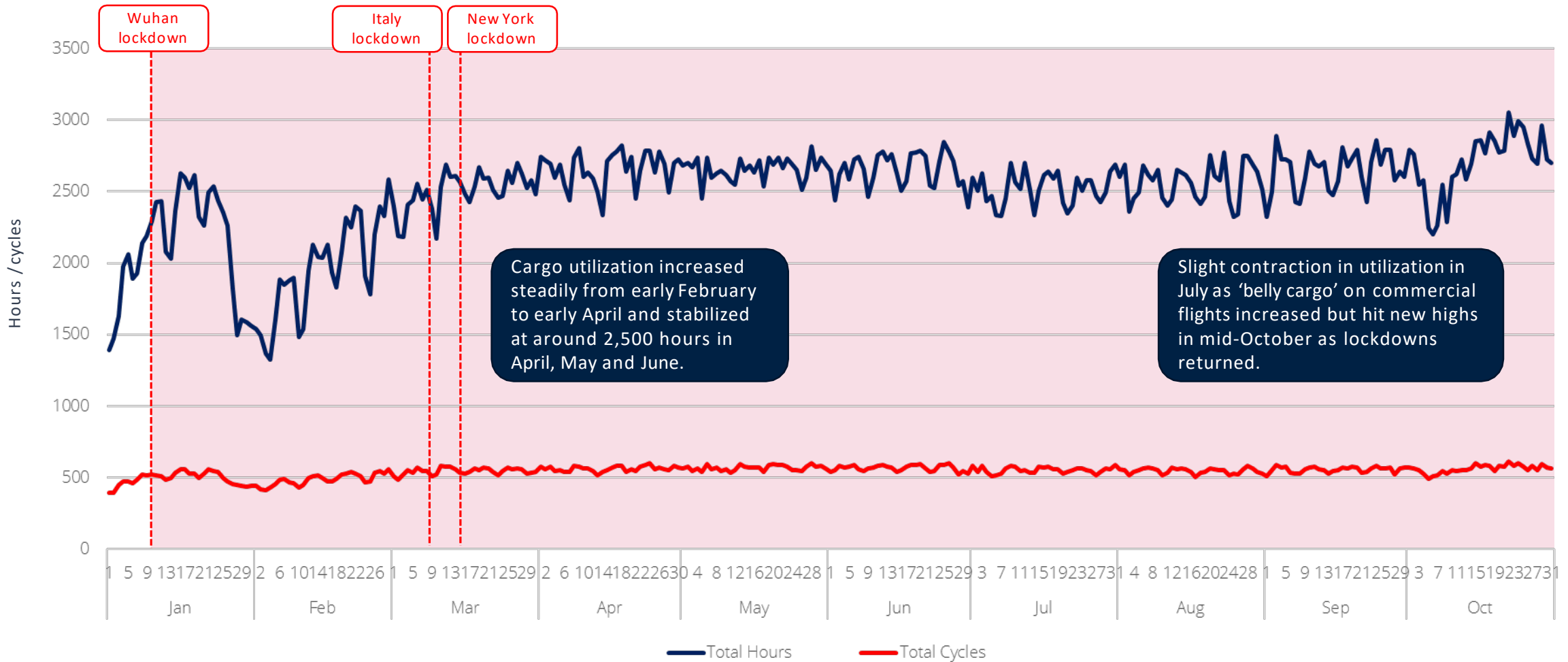
Utilization – Major European Airlines

Utilization rates in hours and cycles for major European airlines, including LCCs – January to October 2020



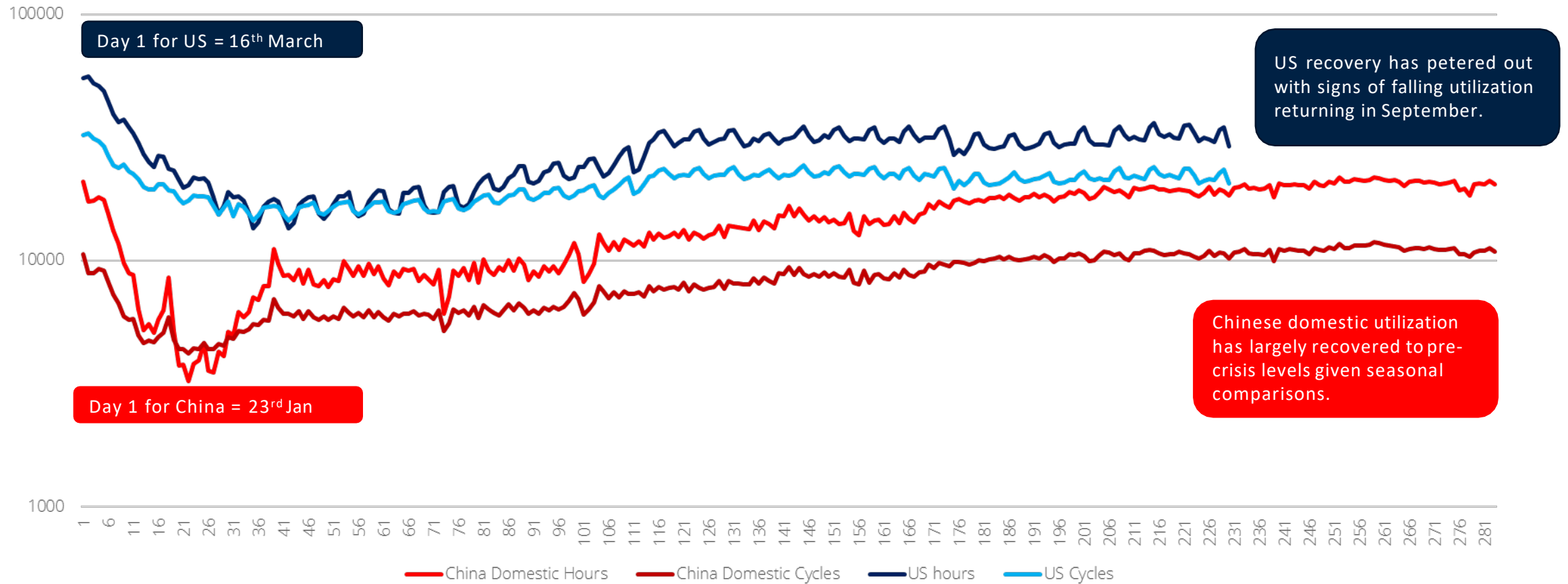
Utilization – Cargo Carriers

Utilization rates in hours for major cargo carriers, excluding package carriers – January to October 2020



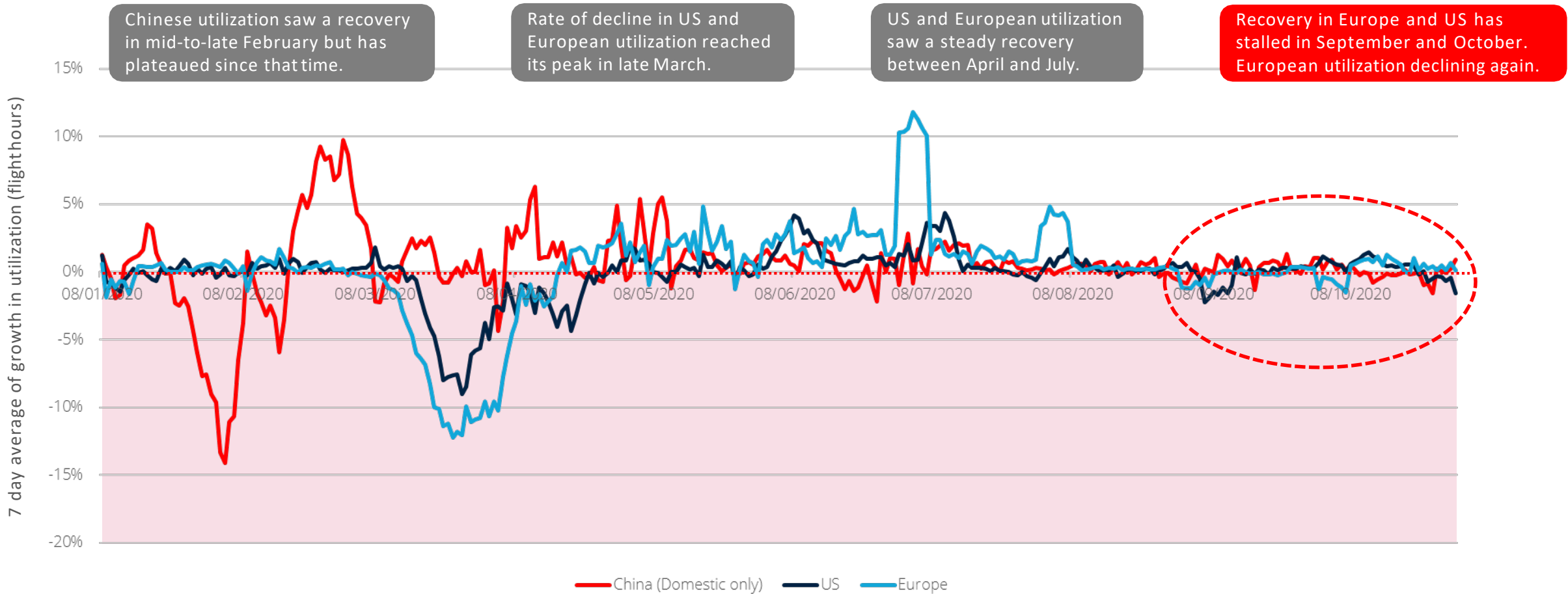
Utilization – China and US comparison

Chinese domestic utilization compared with scheduled US utilization – Days since initial utilization fall



Utilization – The beginnings of a recovery?

7-day average of growth in flight hours suggests recovery stalled in August with signs of decline in October



Select Stock Indices as of 30 October 2020

World Stock Indices Benchmark						
Index	Last	1m %	3m %	MTD %	QTD %	YTD %
Americas						
S&P 500	3,295.19	-1.59%	0.74%	0.77%	-2.02%	1.99%
DJI	26,860.18	-2.97%	1.63%	1.35%	-3.32%	-5.88%
Nasdaq Composite	10,878.79	-1.78%	1.23%	-0.31%	-2.60%	21.23%
NASDAQ 100	11,003.36	-2.26%	0.88%	-0.47%	-3.65%	25.98%
S&P/TSX	15,644.77	-3.42%	-3.24%	0.41%	-2.96%	-8.31%
BOVESPA	93,952.40	-0.07%	-8.71%	0.00%	-0.69%	-18.76%
MXSE IPC	36,987.86	0.94%	-0.09%	0.00%	-1.26%	-15.05%
Europe						
STXE 600	347.86	-4.09%	-2.38%	1.61%	-3.66%	-16.35%
FTSE 100	5,654.97	-4.19%	-4.12%	1.39%	-3.60%	-25.02%
DAX	11,788.28	-11.03%	-11.03%	-11.03%	-11.03%	-11.03%
CAC 40	4,691.14	-2.77%	-1.93%	2.11%	-2.34%	-21.53%
FTSE MIB	18,400.03	-3.48%	-3.62%	2.55%	-3.24%	-21.72%
SMI	9,791.68	-4.49%	-2.14%	2.13%	-3.88%	-7.77%
AEX	543.91	-1.67%	-0.25%	1.88%	-0.69%	-10.04%
IBEX	6,585.60	-2.50%	-4.24%	2.07%	-1.95%	-31.04%
OMXS 30	1,748.42	-3.60%	2.41%	1.79%	-4.43%	-1.32%
Asia						
S&P/ASX 200	5,951.30	2.76%	0.40%	0.40%	2.33%	-10.96%
HANG SENG	24,460.01	4.27%	-0.55%	1.46%	4.27%	-13.23%
Average		-2.33%	-1.95%	0.45%	-2.48%	-9.38%

Source: Thomson Reuters
 Eikon (Price Close Exchange
 Date 30 October 2020)